

CERTIFICATE OF LOCATION OF GOVERNMENT CORNER

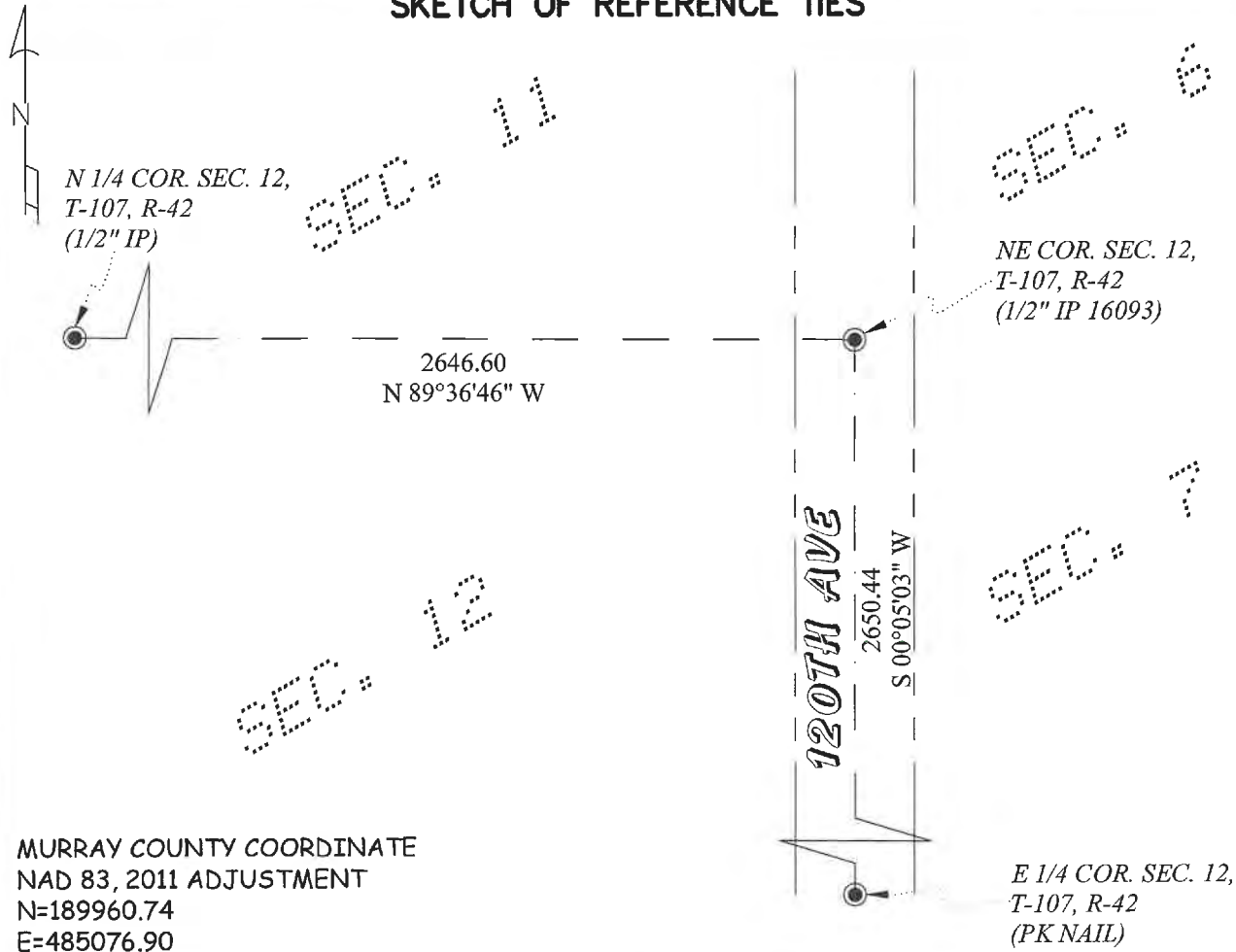
NORTHEAST Corner of Section 12, Township 107 Range 42 5TH P.M.

STATE OF MINNESOTA, County of MURRAY

At the corner location shown on the sketch:

- On 7-21-2021 found a 1/2" Iron Pipe, with Cap #16093
Date _____
- left monument as found, lowered monument, removed monument (explain)
- On _____ placed a _____
Date _____

SKETCH OF REFERENCE TIES



MURRAY COUNTY COORDINATE
 NAD 83, 2011 ADJUSTMENT
 N=189960.74
 E=485076.90

Statement of evidence relative to this corner location is on back of page.

I hereby certify that this document and the data contained herein was prepared by me or under my direct supervision.

B. Murphy
 Signature _____ Date 08-12-2021

Registration No. 42300

- Land Surveyor Professional Engineer
- County Surveyor County Engineer

OFFICE OF THE COUNTY RECORDER

County of MURRAY

I hereby certify that this document was filed in the County Recorders office at _____ o'clock ____ M. on the AUG 16 2021 day of 20.

County Recorder Karen Brown

Documnet Number _____

Statement of Evidence:

Northeast Corner of Section 12, Township 107, Range 42, Murray County, Minnesota.

The Original Government Survey of the Township Boundary was performed by J.W. Myers.

October 19, 1904 - J.W. Woolstincroft Survey shows a 10"x10"x14" Stone was placed at the corner.

Date Unknown - Timothy P. Bell Minnesota Land Surveyor No. 16093 placed a $\frac{1}{2}$ " iron pipe at the corner.

July 21, 2021 - O'Malley & Kron Land Surveyors, Inc. performed a survey in Section 12. The approximate area of the corner was searched and $\frac{1}{2}$ " iron pipe marked 16093 was found at the center line of 120th Ave. The iron pipe was accepted as marking the corner and new ties were made.